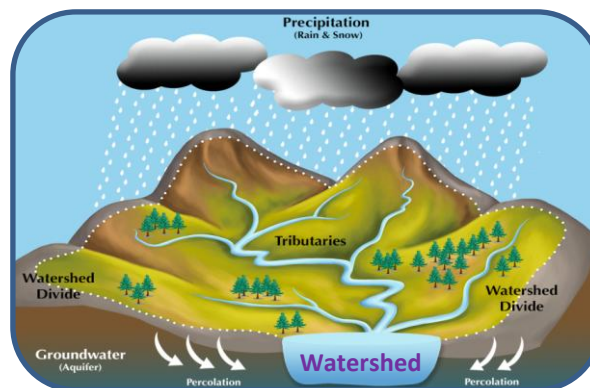


Government of Telangana – Forest Department



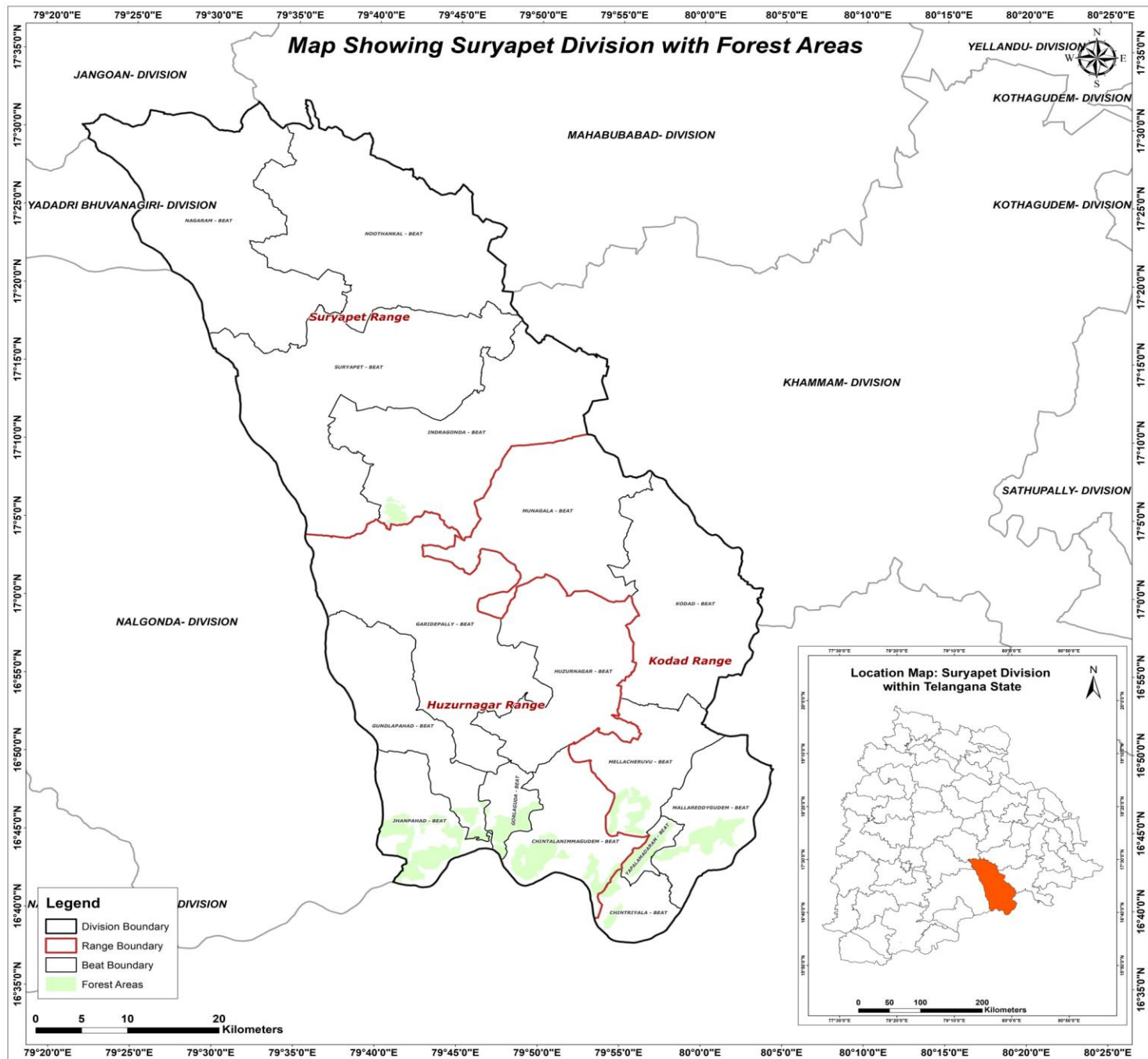
SITE SUITABILITY ANALYSIS FOR WATER HARVESTING STRUCTURES USING REMOTE SENSING & GIS



SITE SUITABILITY ANALYSIS FOR WATER HARVESTING STRUCTURES USING REMOTE SENSING & GIS

Circle: Yadadri
District: Suryapet
Division: Suryapet

**Prepared at Geomatics Centre
O/o Prl.Chief Conservator of Forests
Aranya Bhavan, Saifabad
Hyderabad - 500004**



METHODOLOGY

Various methods are available to evaluate the suitability of locations for Percolation Tanks and other SMC structures using Arc GIS.

- A common approach is to use Geographic Information System (GIS) tools to decide the suitability by analysing factors like topography, vegetation density, distance to water sources, and terrain slope.
- Data was gathered from various sources, including the Raster Sentinel data obtained from the Copernicus open access hub.
- Elevation values were applied to the raster data using the SNAP software to create a Digital Elevation Model (DEM).
- Using Arc GIS, streams were mapped based on DEM, and potential percolation tank sites were identified based on stream order.
- Slope data generated from the CARTOSAT 30 m DEM (Source: Bhuvan) were also included in the analysis.
- By overlaying these spatial datasets and applying specific criteria, GIS can help identify optimal locations for building percolation tanks.
- Once the best location is identified, the catchment area is determined.
- The location is then ranked on the basis of catchment area and vegetation cover, with rankings ranging from I to V.



FLOW CHART FOR METHODOLOGY



Guidelines for building Percolation Tanks:

- Refer to the Site Suitability Map given by the GIS Cell for suitable locations
- Choose the best location for constructing a percolation tank based on the ranking priority. The priority for treatment of the watershed should be based on stream order, with primary streams taking precedence over secondary streams and secondary streams taking precedence over tertiary streams. This phased approach will ensure effective management of the watershed.
- Field conditions such as local climate, slope, vegetation and soil type must be considered when determining the location. It is important to move either upstream or downstream for a distance of about 50M, depending on the specific conditions of the site.
- It is essential to follow the priority given in the map. If no specific points are indicated, site suitability should be considered a determining factor.
- Encroached areas were not considered when demarcating points for constructing the Percolation tank.
- In the field, where streams are found at the optimal location, a percolation tank can be built if a point is missing on the map.
- The catchment area should also be considered when estimating the construction requirements like length of the bund, height of the bund, wear width etc., after verifying with the actual field conditions.
- Planting native vegetation around the tank can stabilize the soil, prevent erosion, and improve water absorption. Use plants that are well suited to the local environment.



Suitability criteria for Check-Dams and Percolation Tanks (SITE SUITABILITY INDEX)

Index	Slope(Degrees)	Density Class
Highly suitable	0-5	Blank & Scrub
Moderately suitable	0-5	Open Forest
Least suitable	0-5	Dense Forest

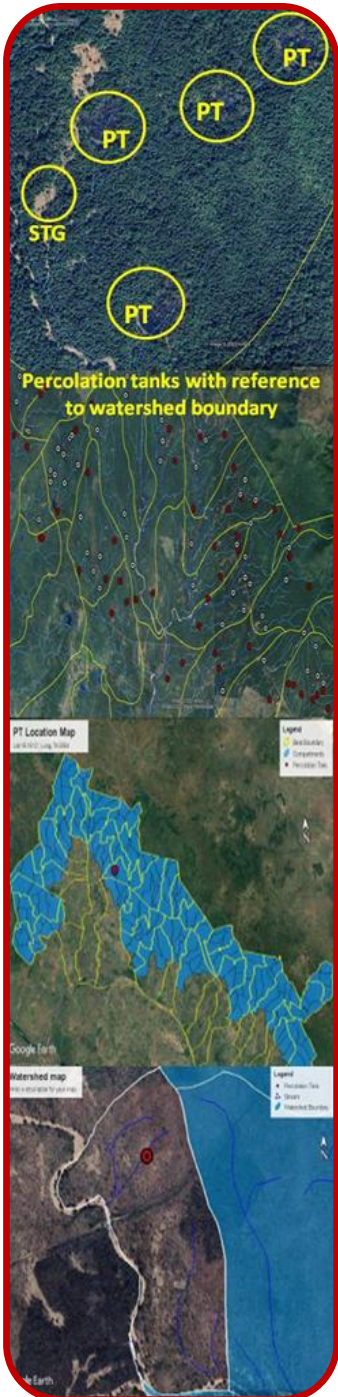
Suitability criteria for Continuous/Staggered contour trenches

Rank	Slope classes (Degrees)	Density Classes
Highly Suitable	>5 and <= 10	Blanks
Moderately Suitable	>5 and <= 10	Scrub forest
Least suitable	>5 and <= 10	Open forest
	> 10 and < 25	Blanks & scrubs
MPTs and SGPs	>5 and <= 10	Dense Forest
	> 10 and < 25	Open and Dense forest



PRIORITY CLASSES FOR PERCOLATION TANK

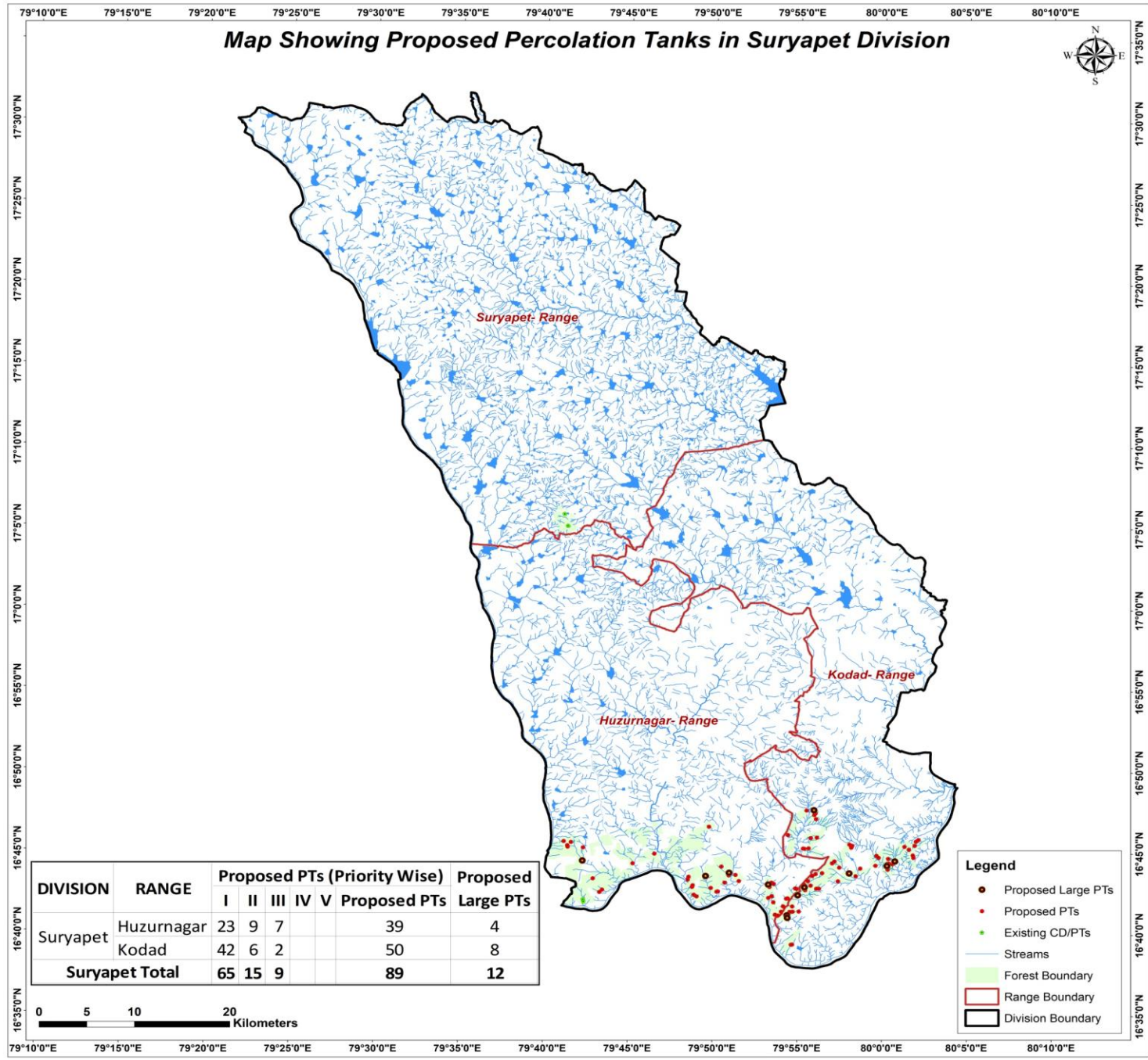
Priority	Catchment Area(Ha)	Density Class
1	0-25	Scrub
	0-25	Blank
2	0-25	Open Forest
	25-50	Blank
3	25-50	Open Forest
	>50	Scrub & blank
4	0-25	Dense Forest
	>50	Open Forest
5	25-50	Dense Forest
	>50	Dense Forest







Map Showing Proposed Percolation Tanks in Suryapet Division

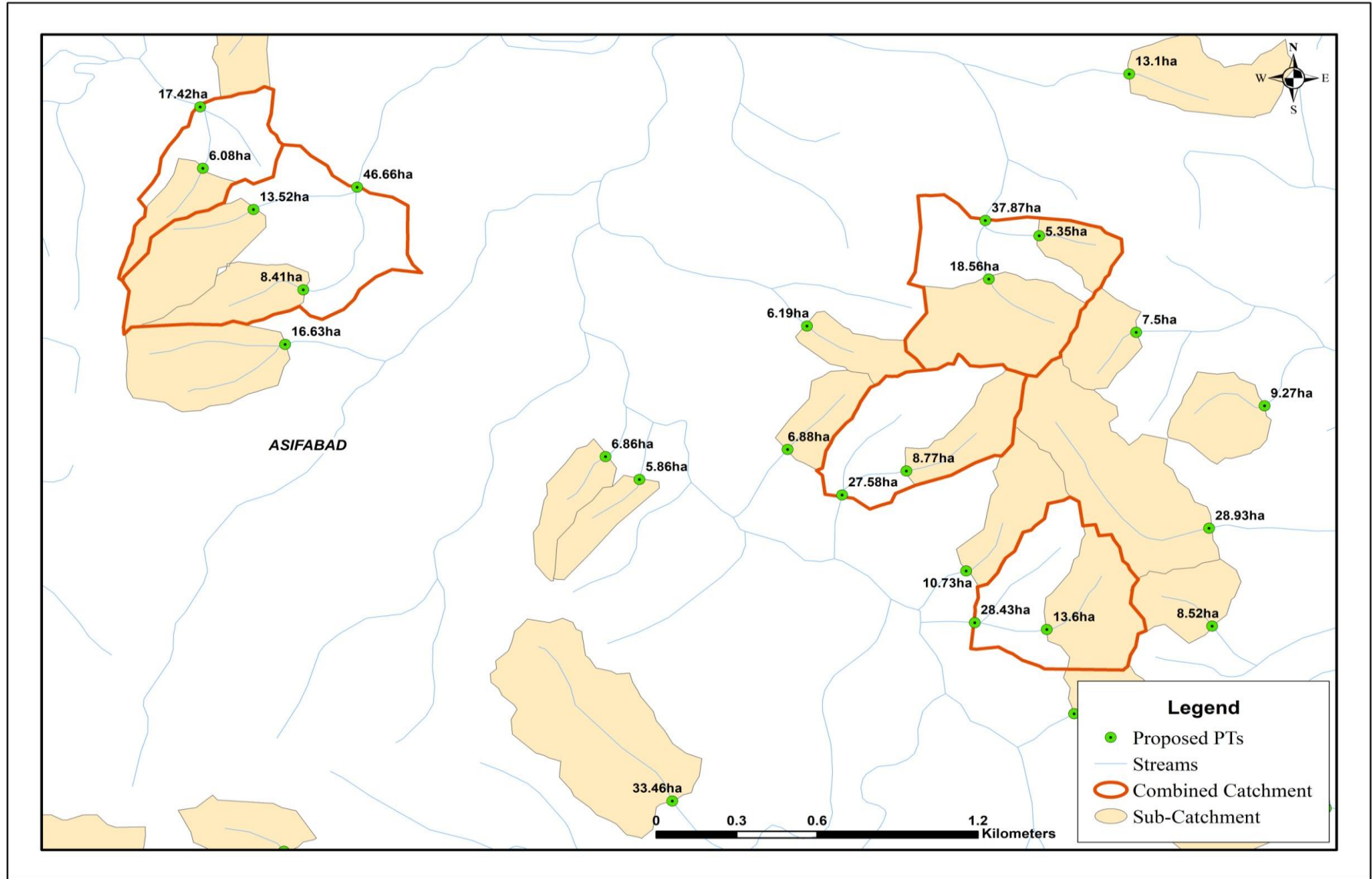


DIVISION	RANGE	Proposed PTs (Priority Wise)					Proposed PTs	Proposed Large PTs
		I	II	III	IV	V		
Suryapet	Huzurnagar	23	9	7			39	4
	Kodad	42	6	2			50	8
Suryapet Total		65	15	9			89	12

- Legend**
- Proposed Large PTs
 - Proposed PTs
 - Existing CD/PTs
 - Streams
 - ▭ Forest Boundary
 - ▭ Range Boundary
 - ▭ Division Boundary



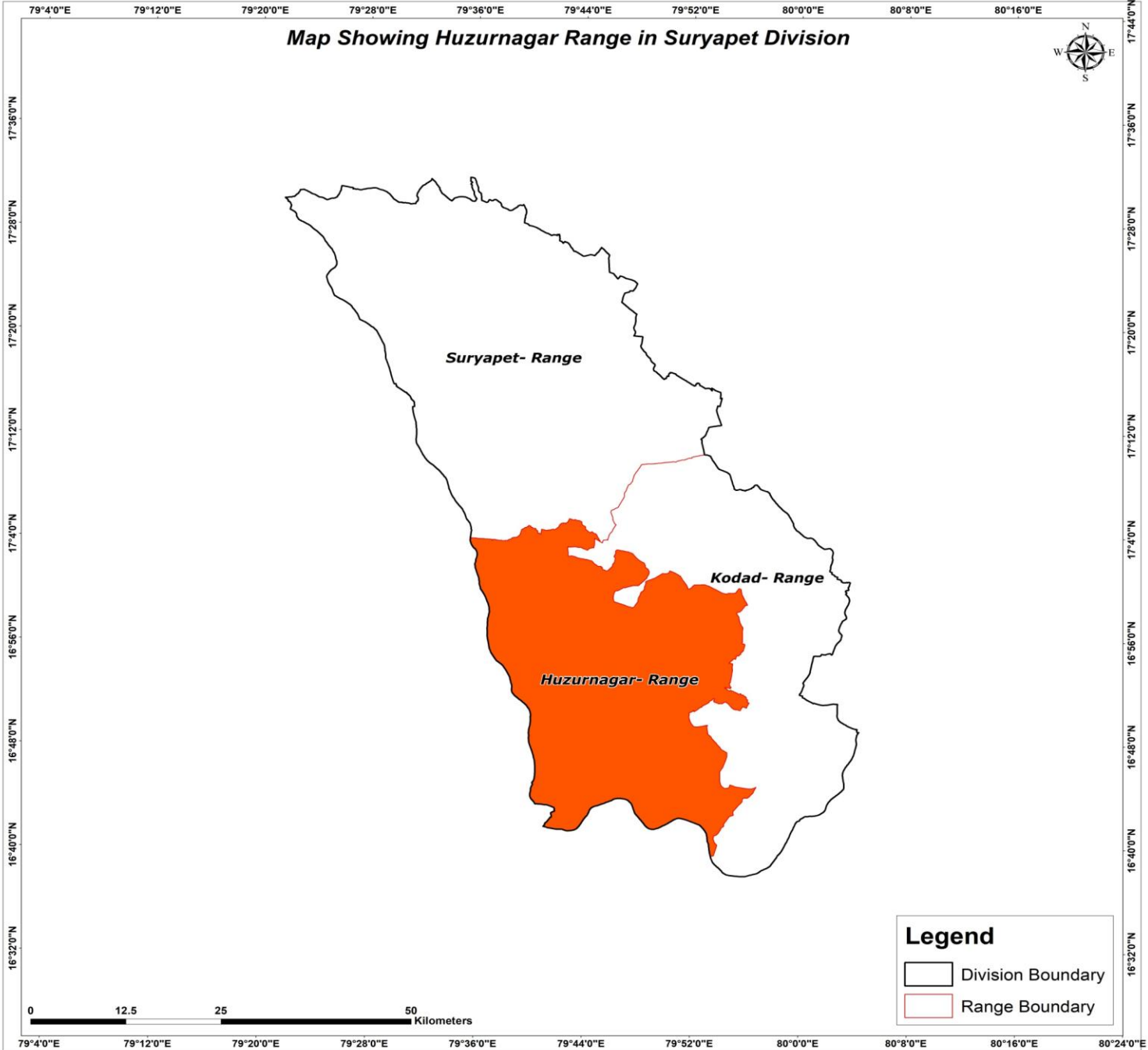
CATCHMENT AREA



Sample Catchment Map



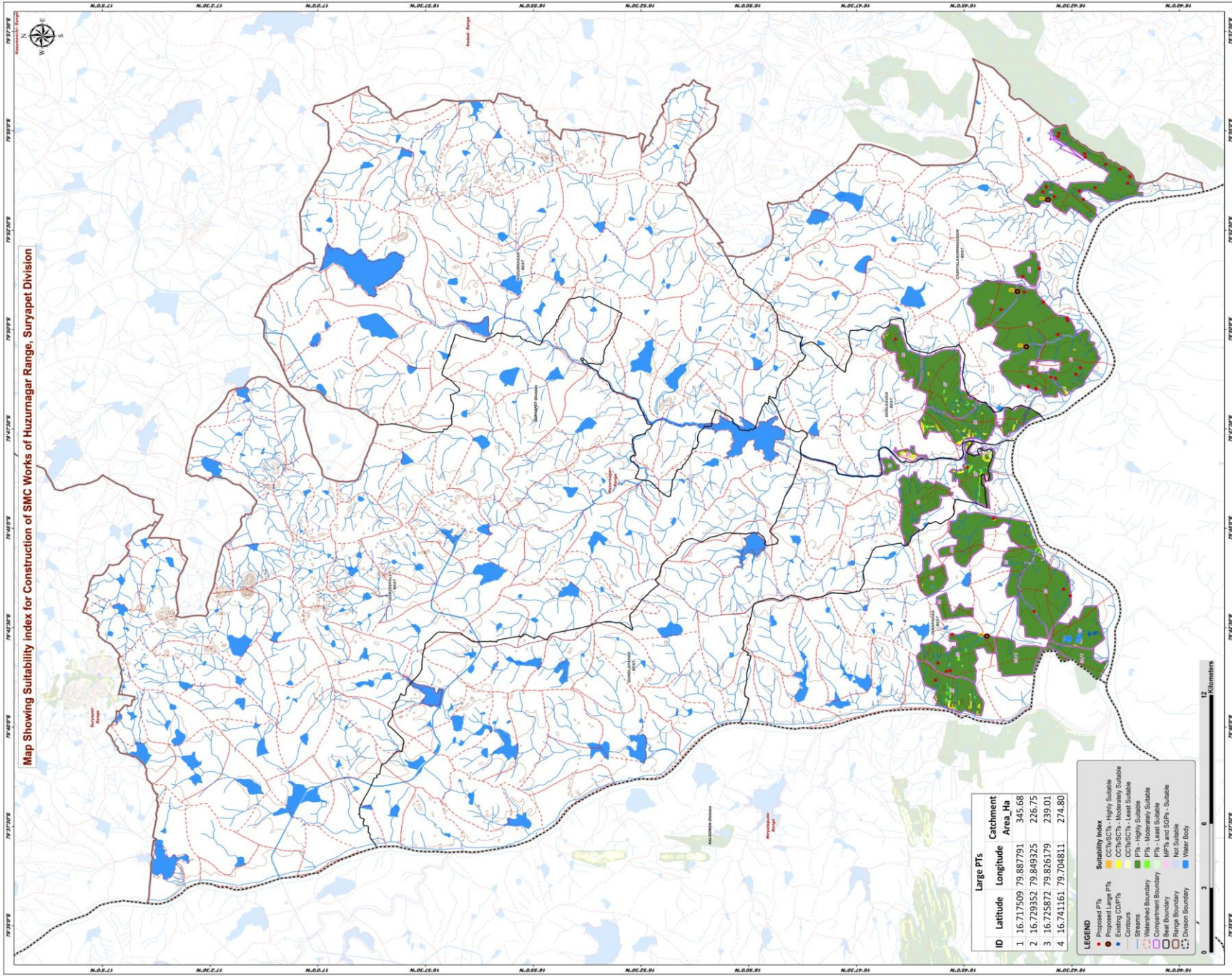
Map Showing Huzurnagar Range in Suryapet Division



Legend

- Division Boundary
- Range Boundary

Map Showing Suitability Index for Construction of SMC Works of Huzumagar Range, Suryapet Division

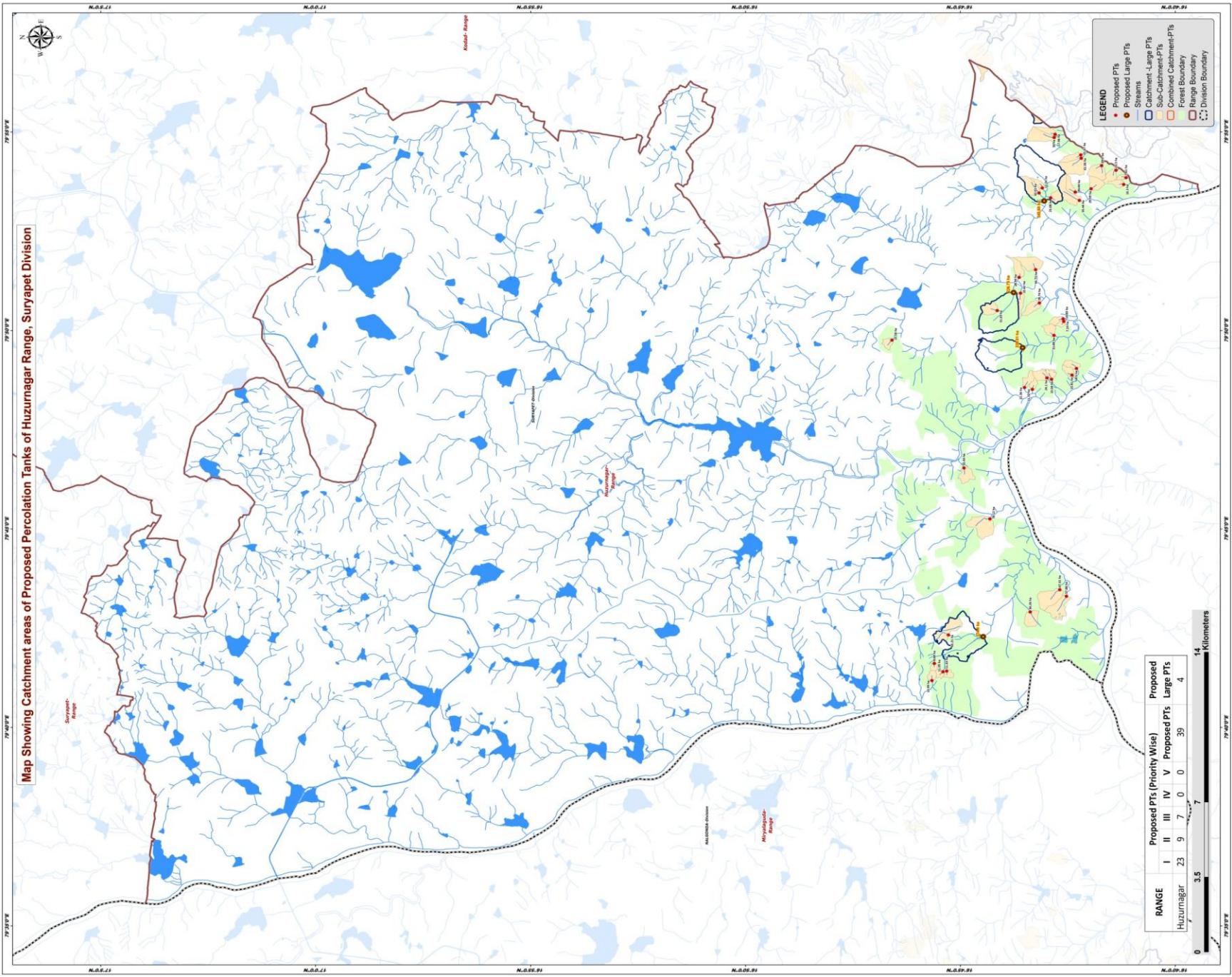


Large PTs		
ID	Latitude	Longitude
1	16.717509	79.887791
2	16.729352	79.849325
3	16.725872	79.826179
4	16.741161	79.704811

Catchment Area Ha	
345.68	
226.75	
239.01	
274.80	

- LEGEND**
- Proposed PTs
 - Existing Large PTs
 - Existing CDP/PTs
 - Contours
 - Streams
 - Watershed Boundary
 - Range Boundary
 - Bar Boundary
 - Range Boundary
 - Division Boundary
 - SMC Works
 - Proposed Large PTs - Highly Suitable
 - Existing Large PTs - Moderately Suitable
 - Existing CDP/PTs - Least Suitable
 - PTs - Highly Suitable
 - PTs - Moderately Suitable
 - PTs - Least Suitable
 - MPAs and SOPs - Suitable
 - MPAs and SOPs - Not Suitable
 - Water Body





Map Showing Catchment areas of Proposed Percolation Tanks of Huzumagar Range, Suryapet Division

- LEGEND**
- Proposed PTs
 - Proposed Large PTs
 - Streams
 - Catchment- Large PTs
 - Sub-Catchment-PTs
 - Combined Catchment-PTs
 - Range Boundary
 - Division Boundary

RANGE	Proposed PTs (Priority Wise)				
	I	II	III	IV	V
Huzumagar	23	9	7	0	0
Suryapet	0	0	0	39	4



Beat wise Abstract of Proposed PT's – Huzurnagar Range

S. No.	Beat	Proposed PT's
1	CHINTALANIMMAGUDEM	28
2	GORLAGUDA	1
3	GUNDLAPAHAD	1
4	JHANPAHAD	9
	Total	39

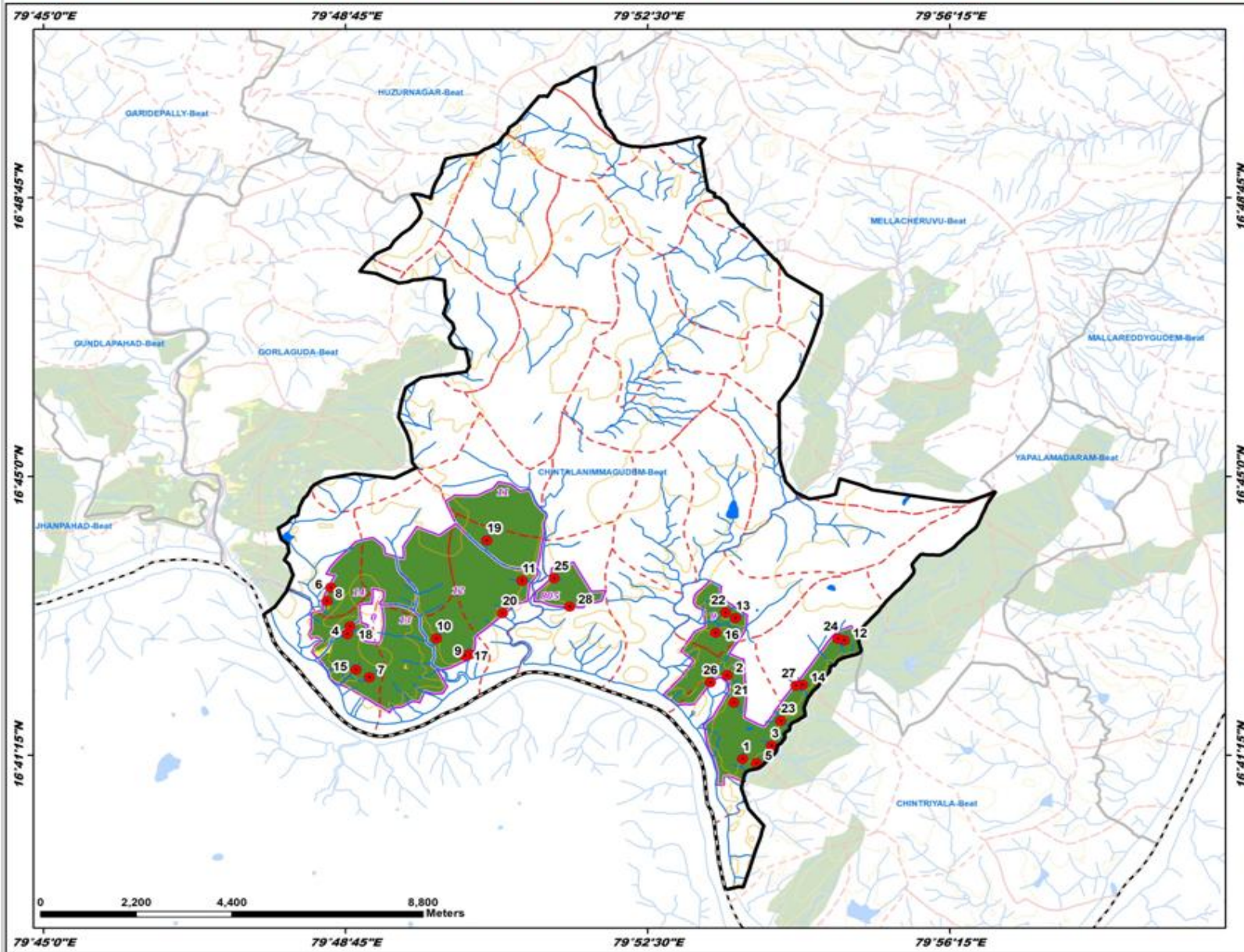
List of Proposed PTs – Huzurnagar Range

ID	Latitude	Longitude	Catchment Area_Ha	Priority	Beat
1	16.686685	79.894727	16.10	I	CHINTALANIMMAGUDEM
2	16.705438	79.891532	20.44	I	CHINTALANIMMAGUDEM
3	16.689657	79.900679	23.50	I	CHINTALANIMMAGUDEM
4	16.714667	79.812917	15.04	I	CHINTALANIMMAGUDEM
5	16.685762	79.897567	7.61	I	CHINTALANIMMAGUDEM
6	16.725118	79.809443	21.36	I	CHINTALANIMMAGUDEM
7	16.704965	79.817444	18.50	I	CHINTALANIMMAGUDEM
8	16.722091	79.808687	11.32	I	CHINTALANIMMAGUDEM
9	16.710157	79.838291	14.83	I	CHINTALANIMMAGUDEM
10	16.713683	79.831344	21.89	I	CHINTALANIMMAGUDEM
11	16.726666	79.849060	22.62	I	CHINTALANIMMAGUDEM
12	16.713234	79.915770	17.96	I	CHINTALANIMMAGUDEM
13	16.718237	79.893211	12.24	I	CHINTALANIMMAGUDEM
14	16.703311	79.907116	21.67	I	CHINTALANIMMAGUDEM
15	16.706689	79.814656	15.81	I	CHINTALANIMMAGUDEM
16	16.714986	79.889126	23.08	I	CHINTALANIMMAGUDEM
17	16.709879	79.837178	7.24	I	CHINTALANIMMAGUDEM
18	16.716393	79.813458	24.10	I	CHINTALANIMMAGUDEM
19	16.735698	79.841763	31.65	II	CHINTALANIMMAGUDEM
20	16.719347	79.844966	28.74	II	CHINTALANIMMAGUDEM
21	16.699325	79.892879	29.59	II	CHINTALANIMMAGUDEM
22	16.719488	79.891144	42.01	II	CHINTALANIMMAGUDEM
23	16.695218	79.902617	39.30	II	CHINTALANIMMAGUDEM
24	16.713625	79.914427	50.00	II	CHINTALANIMMAGUDEM
25	16.727203	79.855674	28.94	II	CHINTALANIMMAGUDEM
26	16.703855	79.888015	55.44	III	CHINTALANIMMAGUDEM
27	16.703125	79.905718	61.36	III	CHINTALANIMMAGUDEM
28	16.720817	79.858930	50.73	III	CHINTALANIMMAGUDEM
29	16.776526	79.829332	15.58	I	GORLAGUDA
30	16.748608	79.775667	32.44	II	GUNDLAPAHAD
31	16.755308	79.690373	11.33	I	JHANPAHAD
32	16.760109	79.693573	8.68	I	JHANPAHAD
33	16.761018	79.686398	13.99	I	JHANPAHAD
34	16.756750	79.690086	11.05	I	JHANPAHAD
35	16.722903	79.715221	36.26	II	JHANPAHAD
36	16.711465	79.724521	67.31	III	JHANPAHAD
37	16.708874	79.721804	57.88	III	JHANPAHAD
38	16.738537	79.754284	78.12	III	JHANPAHAD
39	16.754640	79.705530	63.21	III	JHANPAHAD

Map Showing Suitability Index for Construction of SMC Works of Chintalanimmagudem Beat



Division : Suryapet
Range : Huzurnagar



ID	Latitude	Longitude	Catchment Area Ha	PRIORITY
1	16.686685	79.894727	16.10	I
2	16.705438	79.891532	20.44	I
3	16.689657	79.900679	23.50	I
4	16.714667	79.812917	15.04	I
5	16.685762	79.897567	7.61	I
6	16.725118	79.809443	21.36	I
7	16.704965	79.817644	18.50	I
8	16.722091	79.808687	11.32	I
9	16.710157	79.838291	14.83	I
10	16.713683	79.831344	21.89	I
11	16.726666	79.849090	22.62	I
12	16.713234	79.915770	17.96	I
13	16.718237	79.893211	12.24	I
14	16.703311	79.907116	21.67	I
15	16.706689	79.814656	15.81	I
16	16.714986	79.889126	23.08	I
17	16.709879	79.837178	7.24	I
18	16.716393	79.813458	24.10	I
19	16.735698	79.841763	31.65	II
20	16.719347	79.844966	28.74	II
21	16.699325	79.892879	29.59	II
22	16.719488	79.891144	42.01	II
23	16.695218	79.902617	39.30	II
24	16.713625	79.916427	50.00	II
25	16.727303	79.855674	28.94	II
26	16.703855	79.888015	55.44	III
27	16.703125	79.905718	61.36	III
28	16.720817	79.858930	50.73	III

LEGEND

- Proposed PTs
- Existing CD/PTs
- Contours
- Streams
- Watershed Boundary
- Compartment Boundary
- Beat Boundary
- Division Boundary

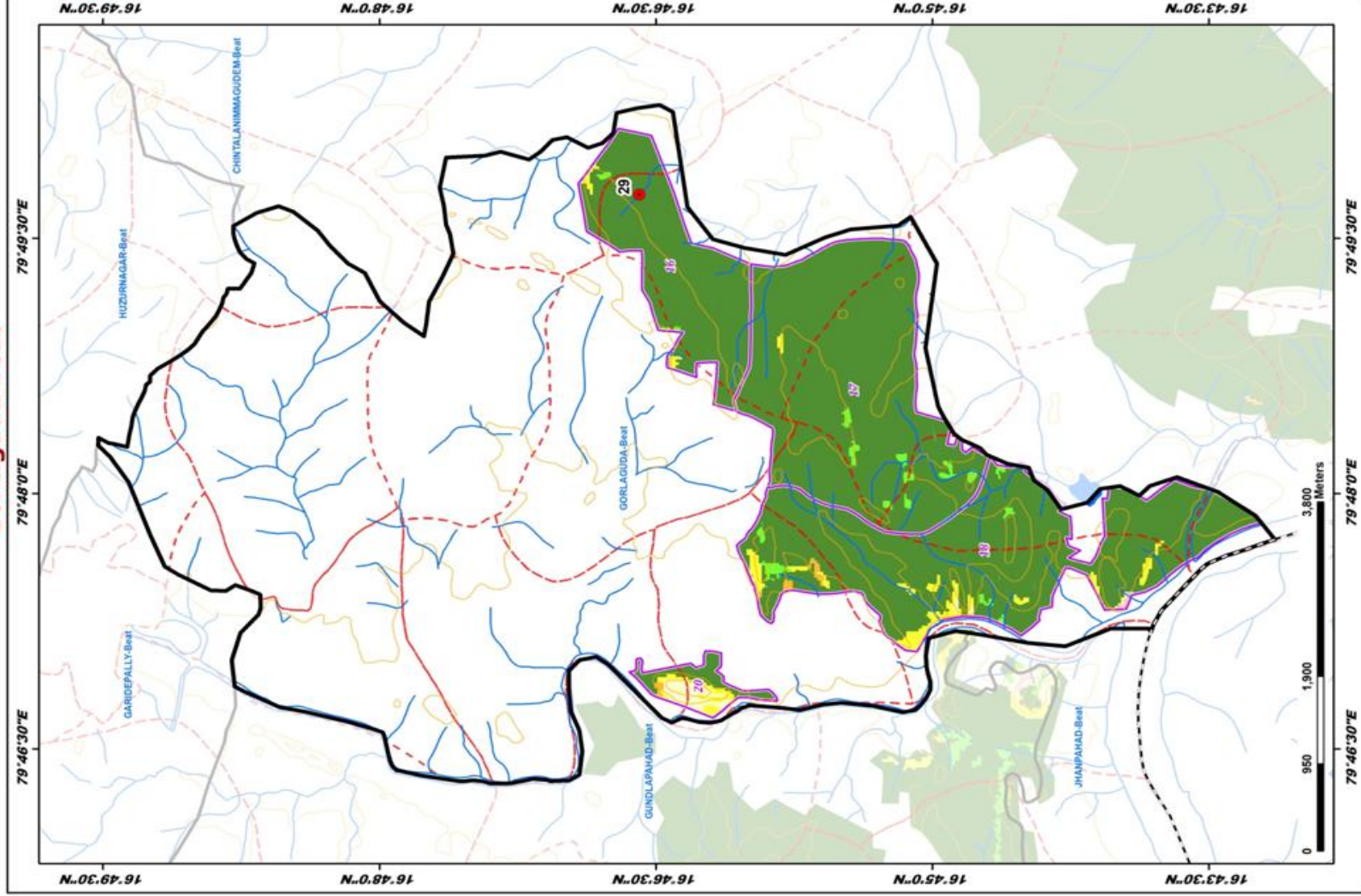
Suitability Index

- CCTs/SCTs - Highly Suitable
- CCTs/SCTs - Moderately Suitable
- CCTs/SCTs - Least Suitable
- PTs - Highly Suitable
- PTs - Moderately Suitable
- PTs - Least Suitable
- MPTs and SGPs - Suitable
- Not Suitable
- Water Body

Map Showing Suitability Index for Construction of SMC Works of Goriaguda Beat



Division : Suryapet
Range : Huzurnagar



ID	Latitude	Longitude	Catchment Area Ha	PRIORITY
29	16.716526	79.829332	15.58	I

LEGEND

- Proposed PTs
- Existing CD/PTs

Contours

Streams

Watershed Boundary

Compartment Boundary

Beat Boundary

Division Boundary

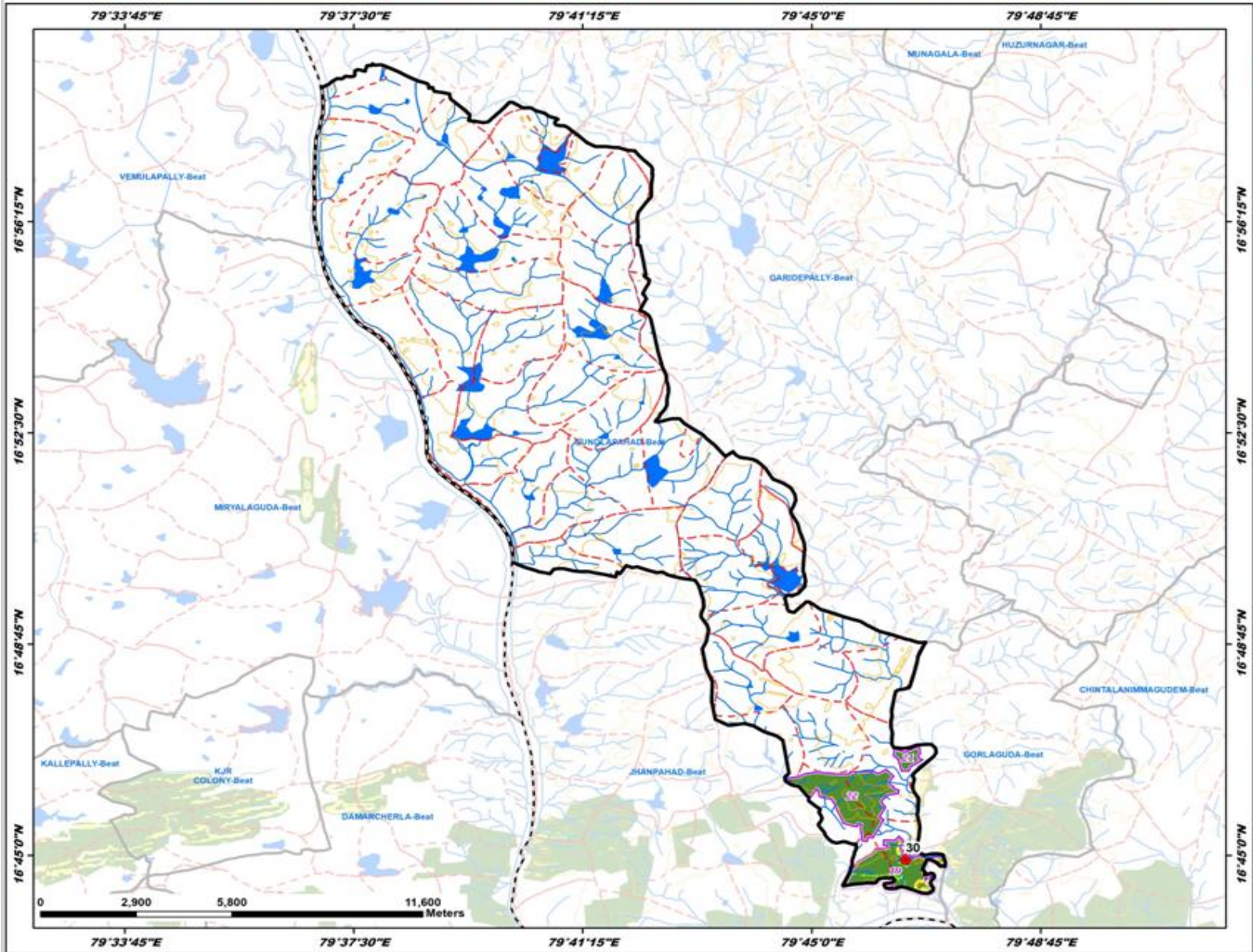
Suitability Index

- CCTs/SCTs - Highly Suitable
- CCTs/SCTs - Moderately Suitable
- CCTs/SCTs - Least Suitable
- PTs - Highly Suitable
- PTs - Moderately Suitable
- PTs - Least Suitable
- MPTs and SGPs - Suitable
- Not Suitable
- Water Body

Map Showing Suitability Index for Construction of SMC Works of Gundlapahad Beat



Division : Suryapet
Range : Huzurnagar



ID	Latitude	Longitude	Catchment Area Ha	PRIORITY
30	16.748608	79.775667	32.44	II

LEGEND

- Proposed PTs
- Existing CD/PTs
- Contours
- Streams
- Watershed Boundary
- Compartment Boundary
- Beat Boundary
- Division Boundary

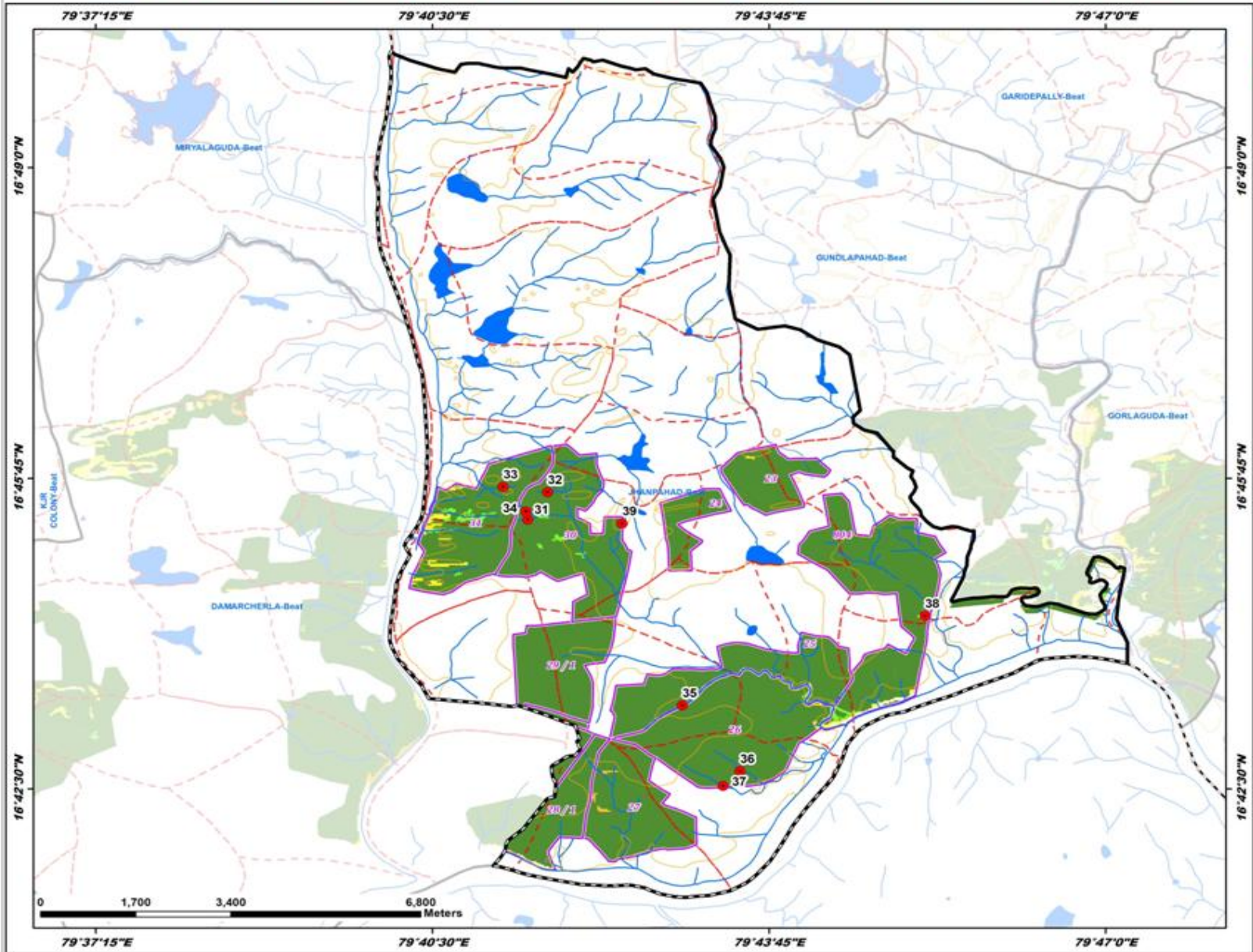
Suitability Index

- CCTs/SCTs - Highly Suitable
- CCTs/SCTs - Moderately Suitable
- CCTs/SCTs - Least Suitable
- PTs - Highly Suitable
- PTs - Moderately Suitable
- PTs - Least Suitable
- MPTs and SGPs - Suitable
- Not Suitable
- Water Body

Map Showing Suitability Index for Construction of SMC Works of Jhanpahad Beat



Division : Suryapet
Range : Huzurnagar



ID	Latitude	Longitude	Catchment Area Ha	PRIORITY
31	16.755308	79.690373	11.33	I
32	16.760109	79.693573	8.68	I
33	16.762018	79.686398	13.99	I
34	16.756750	79.690086	11.05	I
35	16.722903	79.715221	36.26	II
36	16.711465	79.724521	67.31	III
37	16.708874	79.721804	57.88	III
38	16.738537	79.754284	78.12	III
39	16.754640	79.705530	63.21	III

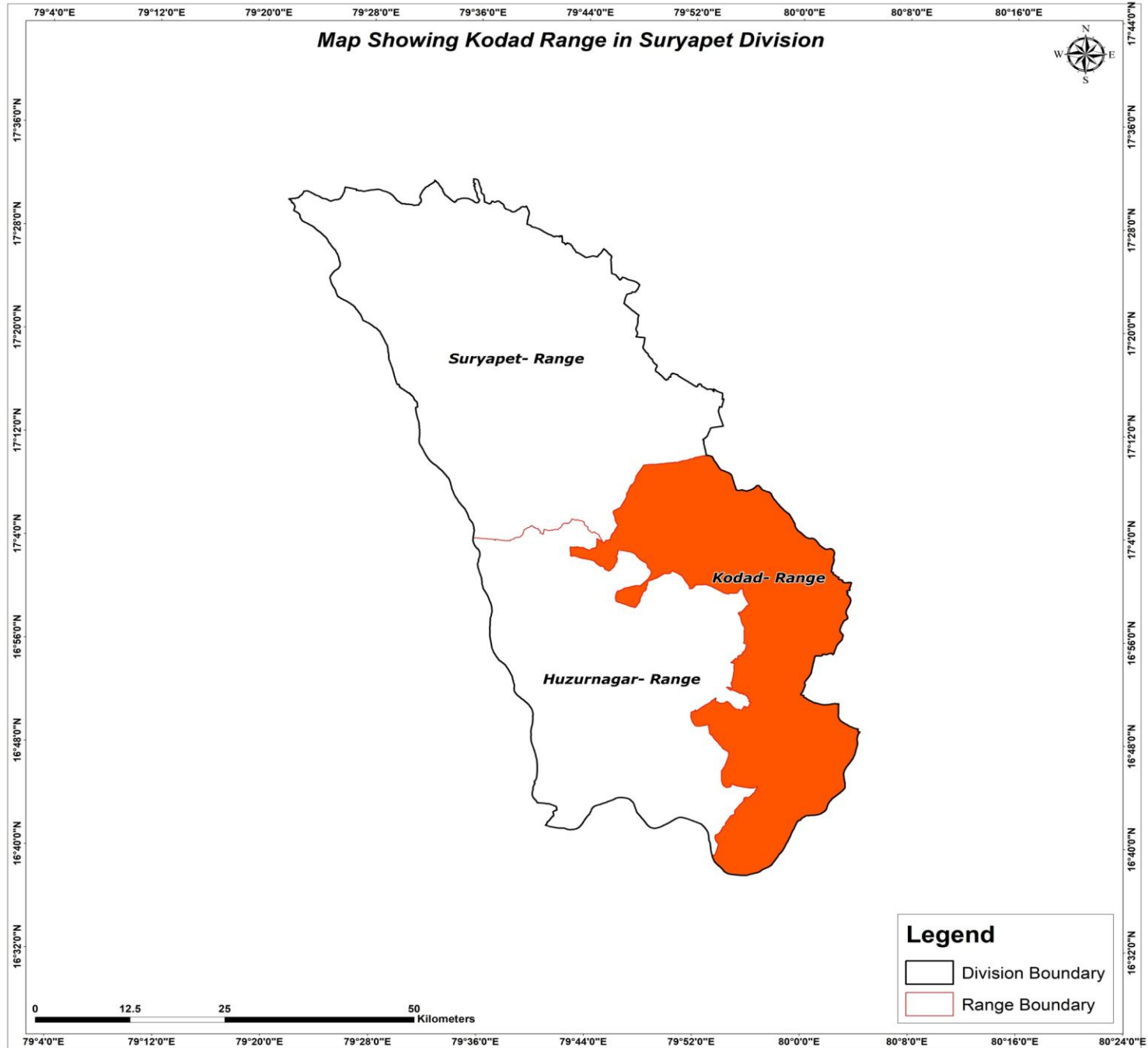
LEGEND

- Proposed PTs
- Existing CD/PTs
- Contours
- Streams
- - - Watershed Boundary
- ▭ Compartment Boundary
- ▭ Beat Boundary
- - - Division Boundary

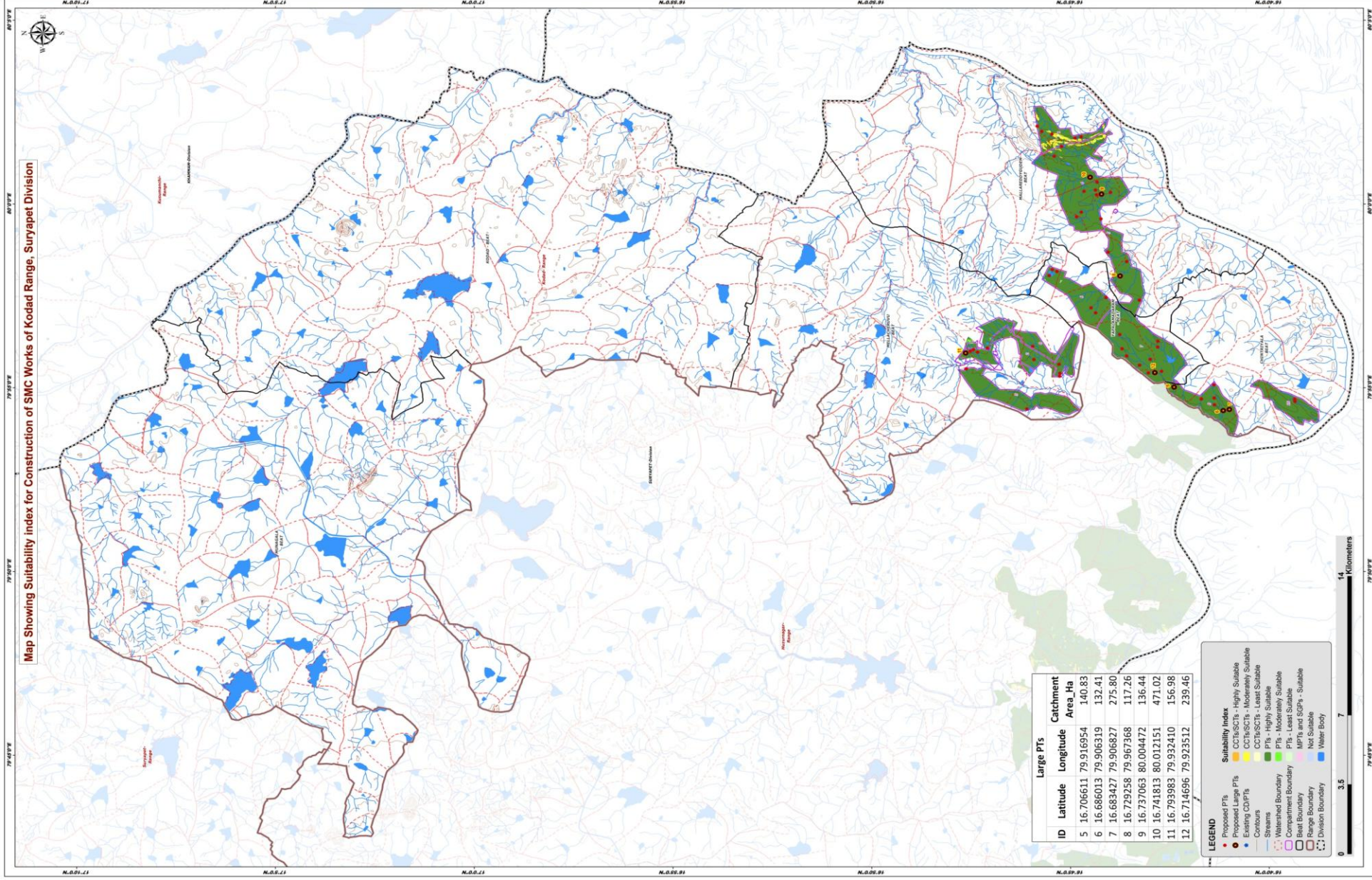
Suitability Index

- CCTs/SCTs - Highly Suitable
- CCTs/SCTs - Moderately Suitable
- CCTs/SCTs - Least Suitable
- PTs - Highly Suitable
- PTs - Moderately Suitable
- PTs - Least Suitable
- MPTs and SGPs - Suitable
- Not Suitable
- Water Body

Map Showing Kodad Range in Suryapet Division



Map Showing Suitability Index for Construction of SMC Works of Kodad Range, Suryapet Division



Large PTs		
ID	Latitude	Longitude
5	16.706611	79.916954
6	16.686013	79.906319
7	16.683427	79.906827
8	16.729258	79.967368
9	16.737063	80.004472
10	16.741813	80.012151
11	16.793983	79.932410
12	16.714696	79.923512
Catchment Area_Ha		
5	140.83	
6	132.41	
7	275.80	
8	117.26	
9	136.44	
10	471.02	
11	156.98	
12	239.46	

LEGEND

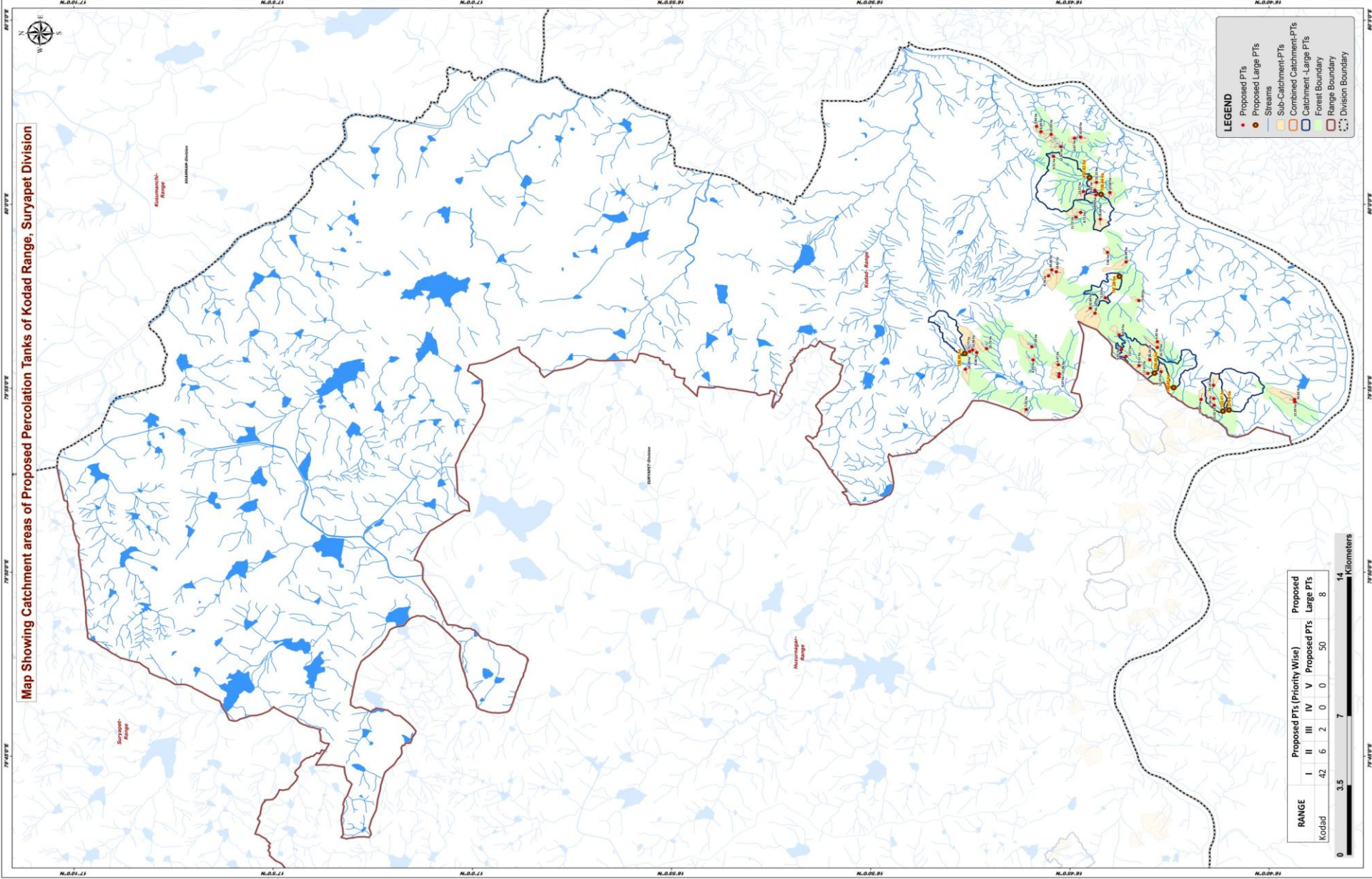
- Proposed PTs
- Existing Large PTs
- Existing CDP/PTs
- Contours
- Streams
- Watershed Boundary
- Compartment Boundary
- Beet Boundary
- Range Boundary
- Division Boundary
- Water Body

Suitability Index

- Highly Suitable
- Moderately Suitable
- Least Suitable
- Highly Suitable
- Moderately Suitable
- Least Suitable
- MPBs and SCPs + Suitable
- Not Suitable



Map Showing Catchment areas of Proposed Percolation Tanks of Kodad Range, Suryapet Division



RANGE	Proposed PTs (Priority Wise)					Proposed Large PTs
	I	II	III	IV	V	
Kodad	42	6	2	0	0	8



- LEGEND**
- Proposed PTs
 - Proposed Large PTs
 - Streams
 - Sub-Catchment-PTs
 - Combined Catchment-PTs
 - Catchment-Large PTs
 - Forest Boundary
 - Range Boundary
 - Division Boundary

Beat wise Abstract of Proposed PT's – Kodad Range

S. No.	Beat	Proposed PT's
1	CHINTRIYALA	6
2	MALLAREDDYGUDEM	18
3	MELLACHERUVU	11
4	YAPALAMADARAM	15
	Total	50

List of Proposed PTs – Kodad Range

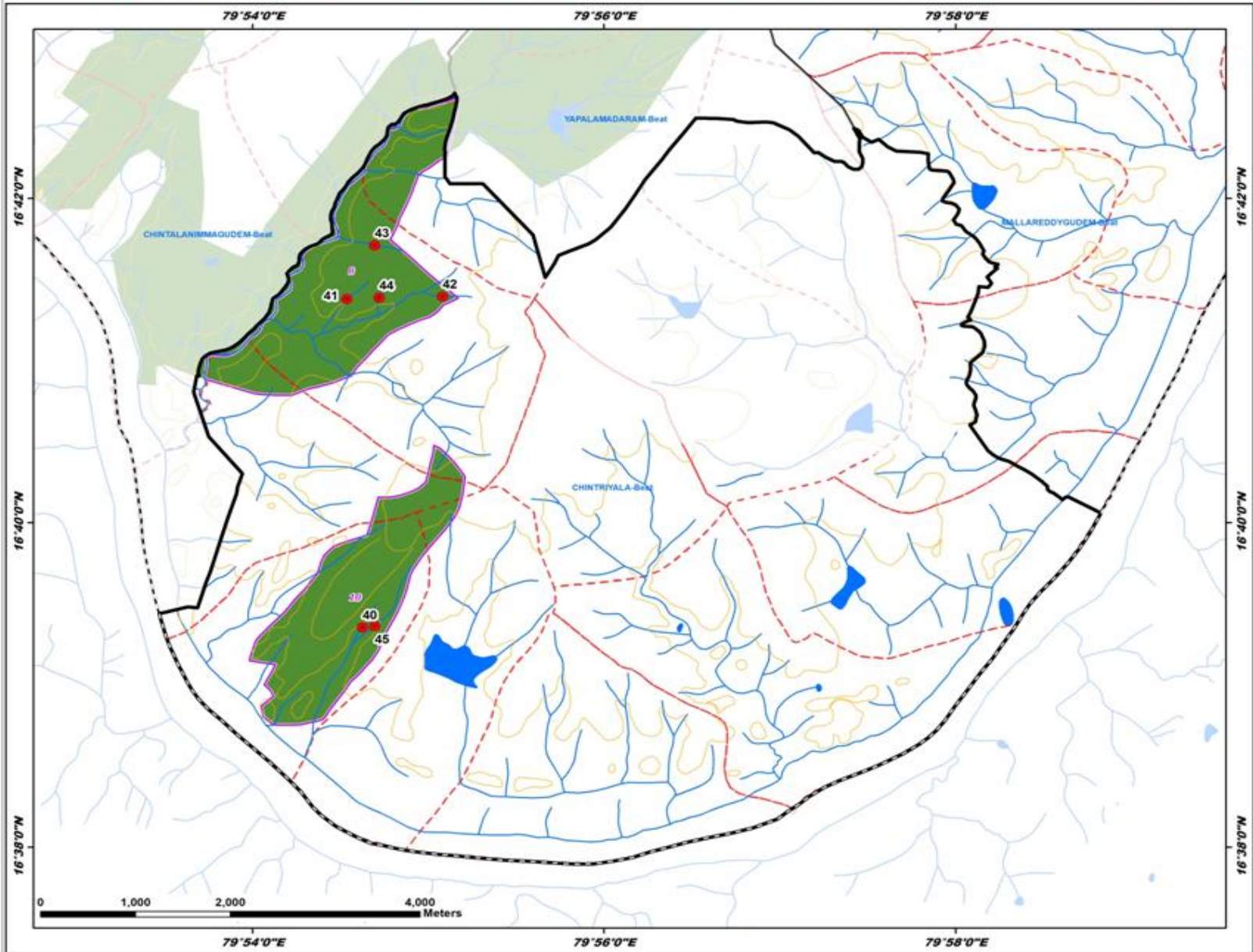
ID	Latitude	Longitude	Catchment Area_Ha	Priority	Beat
40	16.655927	79.910441	12.29	I	CHINTRIYALA
41	16.689672	79.908957	15.02	I	CHINTRIYALA
42	16.689921	79.918015	19.18	I	CHINTRIYALA
43	16.695166	79.911594	15.69	I	CHINTRIYALA
44	16.689786	79.912004	7.94	I	CHINTRIYALA
45	16.656044	79.911581	42.83	II	CHINTRIYALA
46	16.753814	80.026088	12.81	I	MALLAREDDYGUDEM
47	16.739151	80.004186	11.92	I	MALLAREDDYGUDEM
48	16.733273	80.005323	10.68	I	MALLAREDDYGUDEM
49	16.762121	80.032920	8.09	I	MALLAREDDYGUDEM
50	16.748051	80.029955	6.67	I	MALLAREDDYGUDEM
51	16.734288	79.978186	7.66	I	MALLAREDDYGUDEM
52	16.721152	79.956400	5.83	I	MALLAREDDYGUDEM
53	16.745492	79.996308	8.71	I	MALLAREDDYGUDEM
54	16.756884	80.021700	6.51	I	MALLAREDDYGUDEM
55	16.738888	80.009921	15.15	I	MALLAREDDYGUDEM
56	16.745565	80.030452	10.03	I	MALLAREDDYGUDEM
57	16.739572	80.006371	8.41	I	MALLAREDDYGUDEM
58	16.747460	79.994178	11.72	I	MALLAREDDYGUDEM
59	16.763984	80.035281	5.94	I	MALLAREDDYGUDEM
60	16.757869	80.031667	15.43	I	MALLAREDDYGUDEM
61	16.744369	80.005761	13.57	I	MALLAREDDYGUDEM
62	16.737297	79.993237	29.64	II	MALLAREDDYGUDEM
63	16.726509	79.973888	26.99	II	MALLAREDDYGUDEM
64	16.789009	79.932842	8.48	I	MELLACHERUVU
65	16.784869	79.934645	20.73	I	MELLACHERUVU
66	16.754576	79.921909	9.07	I	MELLACHERUVU
67	16.754452	79.923246	11.06	I	MELLACHERUVU
68	16.790743	79.933982	13.58	I	MELLACHERUVU
69	16.754824	79.927318	6.47	I	MELLACHERUVU
70	16.765889	79.935466	17.29	I	MELLACHERUVU
71	16.765380	79.929459	6.25	I	MELLACHERUVU
72	16.768328	79.907077	7.02	I	MELLACHERUVU
73	16.793729	79.925286	18.08	I	MELLACHERUVU
74	16.792008	79.933272	51.77	III	MELLACHERUVU
75	16.758963	79.967570	9.78	I	YAPALAMADARAM
76	16.755707	79.969423	18.62	I	YAPALAMADARAM
77	16.729416	79.940816	10.90	I	YAPALAMADARAM
78	16.711871	79.924137	12.19	I	YAPALAMADARAM
79	16.713472	79.935187	20.77	I	YAPALAMADARAM

ID	Latitude	Longitude	Catchment Area_Ha	Priority	Beat
80	16.717383	79.923383	17.67	I	YAPALAMADARAM
81	16.726499	79.931104	7.27	I	YAPALAMADARAM
82	16.735201	79.957621	5.53	I	YAPALAMADARAM
83	16.721087	79.926913	9.11	I	YAPALAMADARAM
84	16.728418	79.934363	5.51	I	YAPALAMADARAM
85	16.713428	79.937759	6.45	I	YAPALAMADARAM
86	16.716587	79.929564	36.33	II	YAPALAMADARAM
87	16.757629	79.970291	39.06	II	YAPALAMADARAM
88	16.741438	79.952909	32.69	II	YAPALAMADARAM
89	16.739502	79.950678	61.12	III	YAPALAMADARAM

Map Showing Suitability Index for Construction of SMC Works of Chintriyala Beat



Division : Suryapet
Range : Kodad



ID	Latitude	Longitude	Catchment Area Ha	PRIORITY
40	16.655927	79.910441	12.29	I
41	16.689672	79.908957	15.02	I
42	16.689921	79.918015	18.18	I
43	16.695166	79.911594	15.69	I
44	16.689786	79.912004	7.94	I
45	16.656044	79.911581	42.83	II

LEGEND

- Proposed PTs
- Existing CD/PTs
- Contours
- Streams
- - - Watershed Boundary
- ▭ Compartment Boundary
- ▭ Beat Boundary
- - - Division Boundary

Suitability Index

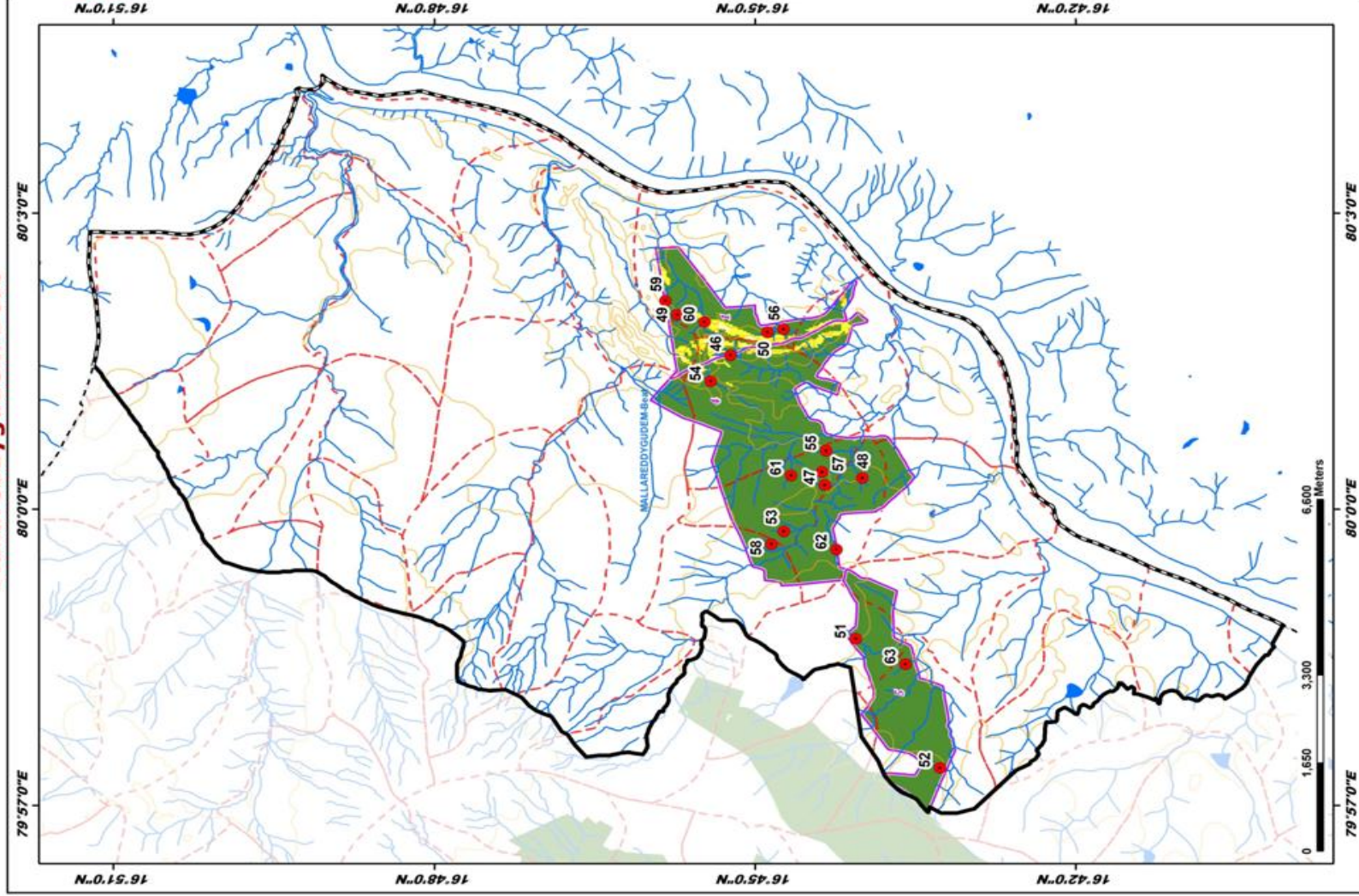
- CCTs/SCTs - Highly Suitable
- CCTs/SCTs - Moderately Suitable
- CCTs/SCTs - Least Suitable
- PTs - Highly Suitable
- PTs - Moderately Suitable
- PTs - Least Suitable
- MPTs and SGPs - Suitable
- Not Suitable
- Water Body



Map Showing Suitability Index for Construction of SMC Works of Mallareddygudem Beat



Division : Suryapet
Range : Kodad



ID	Latitude	Longitude	Catchment Area Ha	PRIORITY
46	16.738814	80.026088	12.81	I
47	16.739151	80.004186	11.92	I
48	16.733273	80.005323	10.66	I
49	16.762121	80.029220	8.09	I
50	16.748051	80.029955	6.67	I
51	16.734288	79.978186	7.66	I
52	16.721152	79.956400	5.83	I
53	16.745492	79.996308	8.71	I
54	16.756884	80.021700	6.51	I
55	16.738888	80.009921	15.15	I
56	16.745565	80.030452	10.03	I
57	16.739572	80.006371	8.41	I
58	16.747460	79.994178	11.72	I
59	16.763984	80.035281	5.94	I
60	16.757869	80.031667	15.43	I
61	16.744869	80.005761	13.57	I
62	16.737297	79.993237	20.64	II
63	16.726099	79.973888	26.99	II

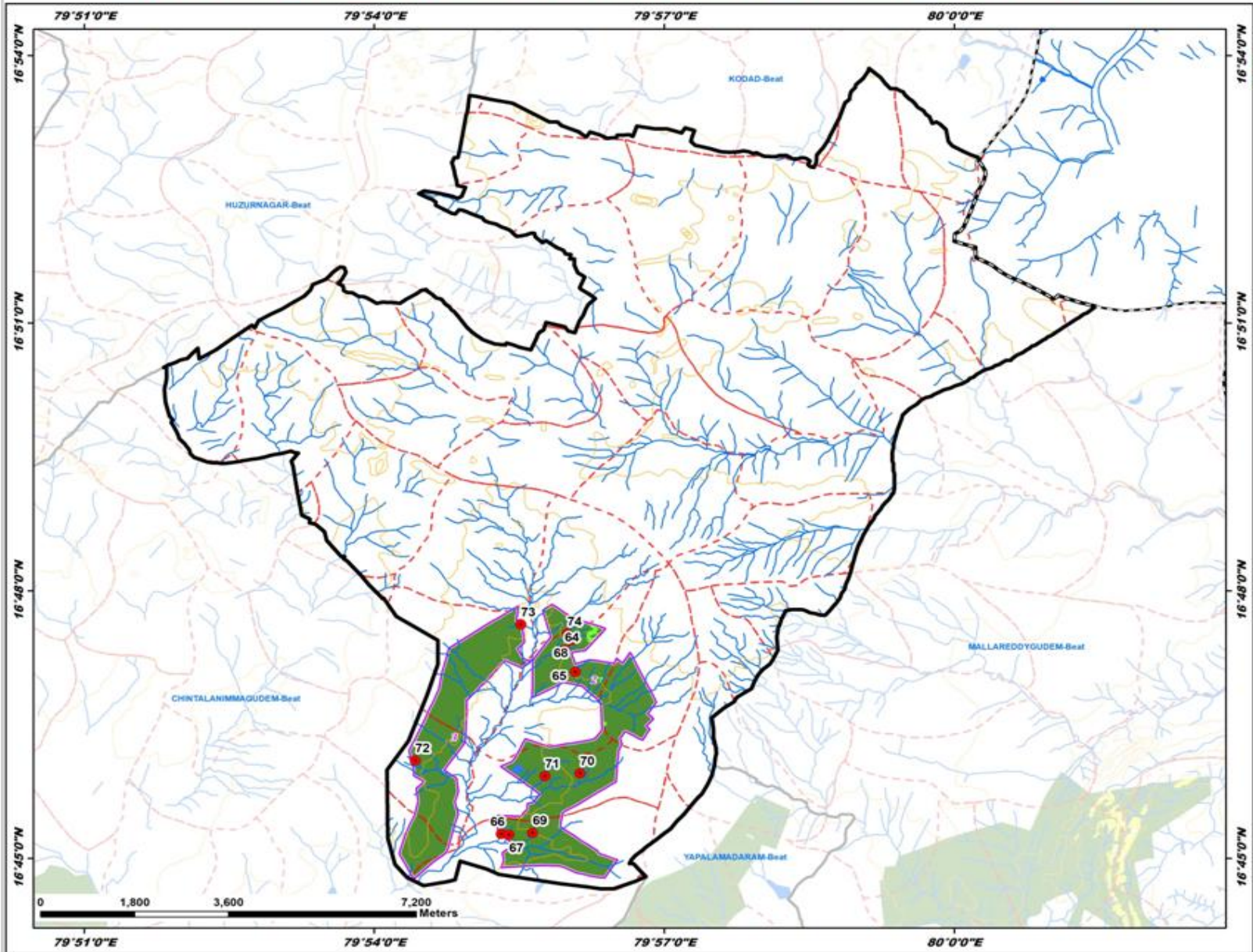
LEGEND

- Proposed PTs
 - Existing CD/PTs
 - Contours
 - Streams
 - Watershed Boundary
 - Compartment Boundary
 - Beat Boundary
 - Division Boundary
- ### Suitability Index
- CCTs/SCTs - Highly Suitable
 - CCTs/SCTs - Moderately Suitable
 - CCTs/SCTs - Least Suitable
 - PTs - Highly Suitable
 - PTs - Moderately Suitable
 - PTs - Least Suitable
 - MPTs and SGPs - Suitable
 - Nor Suitable
 - Water Body

Map Showing Suitability Index for Construction of SMC Works of Mellacheruvu



Division : Suryapet
Range : Kodad



ID	Latitude	Longitude	Catchment Area Ha	PRIORITY
64	16.789009	79.932842	8.48	I
65	16.794869	79.934645	20.73	I
66	16.754576	79.921909	9.07	I
67	16.754452	79.923246	11.06	I
68	16.790743	79.933982	13.58	I
69	16.754824	79.927318	6.47	I
70	16.765889	79.935466	17.29	I
71	16.765380	79.929459	6.25	I
72	16.768328	79.907077	7.02	I
73	16.793729	79.925286	18.08	I
74	16.792008	79.933272	53.77	III

LEGEND

- Proposed PTs
- Existing CD/PTs
- Contours
- Streams
- - - Watershed Boundary
- Compartment Boundary
- Beat Boundary
- - - Division Boundary

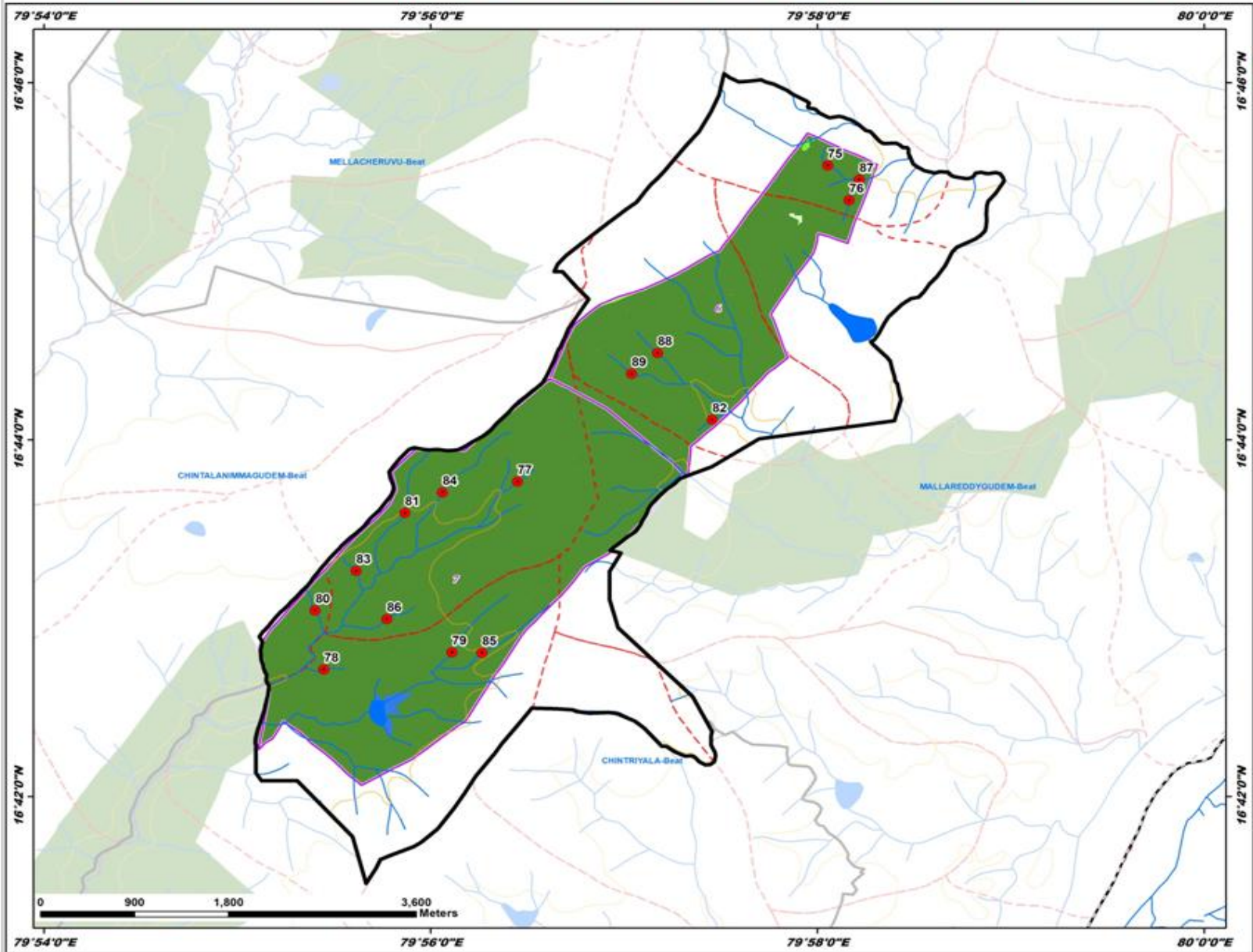
Suitability Index

- CCTs/SCTs - Highly Suitable
- CCTs/SCTs - Moderately Suitable
- CCTs/SCTs - Least Suitable
- PTs - Highly Suitable
- PTs - Moderately Suitable
- PTs - Least Suitable
- MPTs and SGPs - Suitable
- Not Suitable
- Water Body

Map Showing Suitability Index for Construction of SMC Works of Yapalamadaram



Division : Suryapet
Range : Kodad



ID	Latitude	Longitude	Catchment Area Ha	PRIORITY
75	16.758963	79.967570	9.78	I
76	16.755707	79.969423	18.62	I
77	16.729416	79.940816	10.90	I
78	16.711871	79.924137	12.19	I
79	16.713472	79.935187	20.77	I
80	16.717883	79.923383	17.67	I
81	16.726499	79.931104	7.27	I
82	16.735201	79.957621	5.53	I
83	16.721087	79.926913	9.11	I
84	16.728418	79.934363	5.51	I
85	16.713428	79.937759	6.45	I
86	16.716587	79.929564	36.33	II
87	16.757629	79.970291	39.06	II
88	16.741438	79.952909	32.69	II
89	16.739502	79.950678	61.12	III

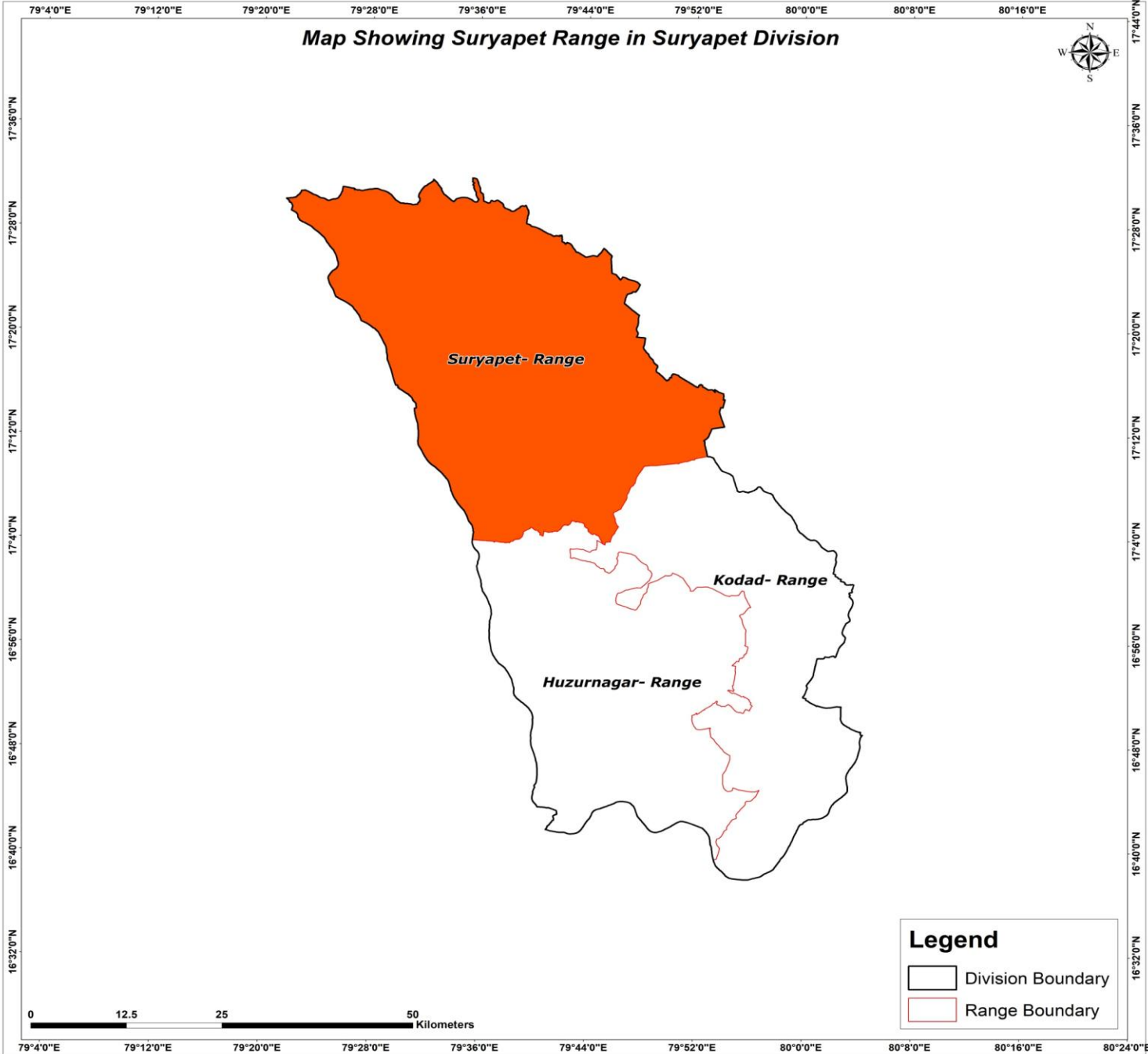
LEGEND

- Proposed PTs
- Existing CD/PTs
- Contours
- Streams
- - - Watershed Boundary
- Compartment Boundary
- Beat Boundary
- - - Division Boundary

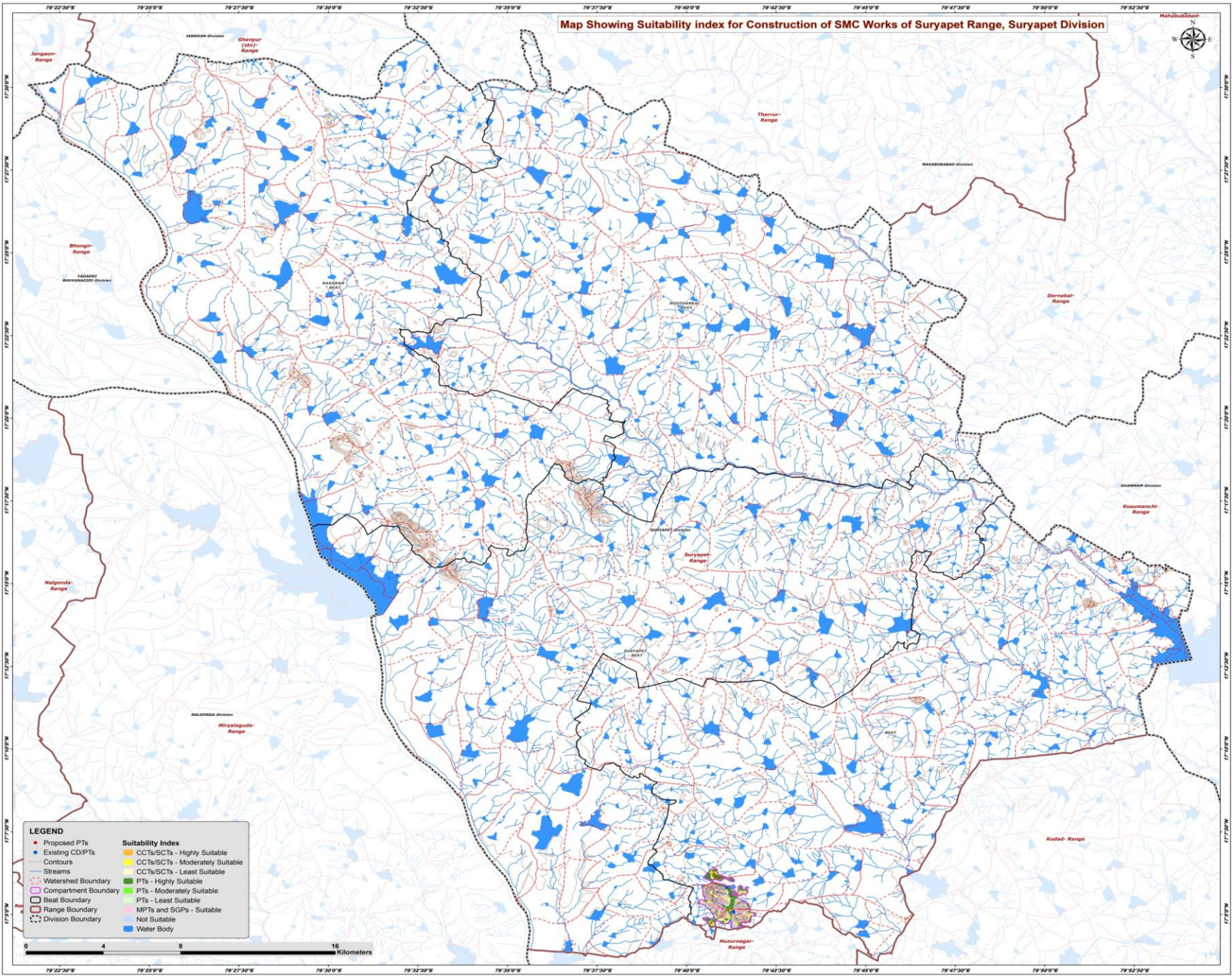
Suitability Index

- CCTs/SCTs - Highly Suitable
- CCTs/SCTs - Moderately Suitable
- CCTs/SCTs - Least Suitable
- PTs - Highly Suitable
- PTs - Moderately Suitable
- PTs - Least Suitable
- MPTs and SGPs - Suitable
- Not Suitable
- Water Body

Map Showing Suryapet Range in Suryapet Division



Map Showing Suitability index for Construction of SMC Works of Suryapet Range, Suryapet Division

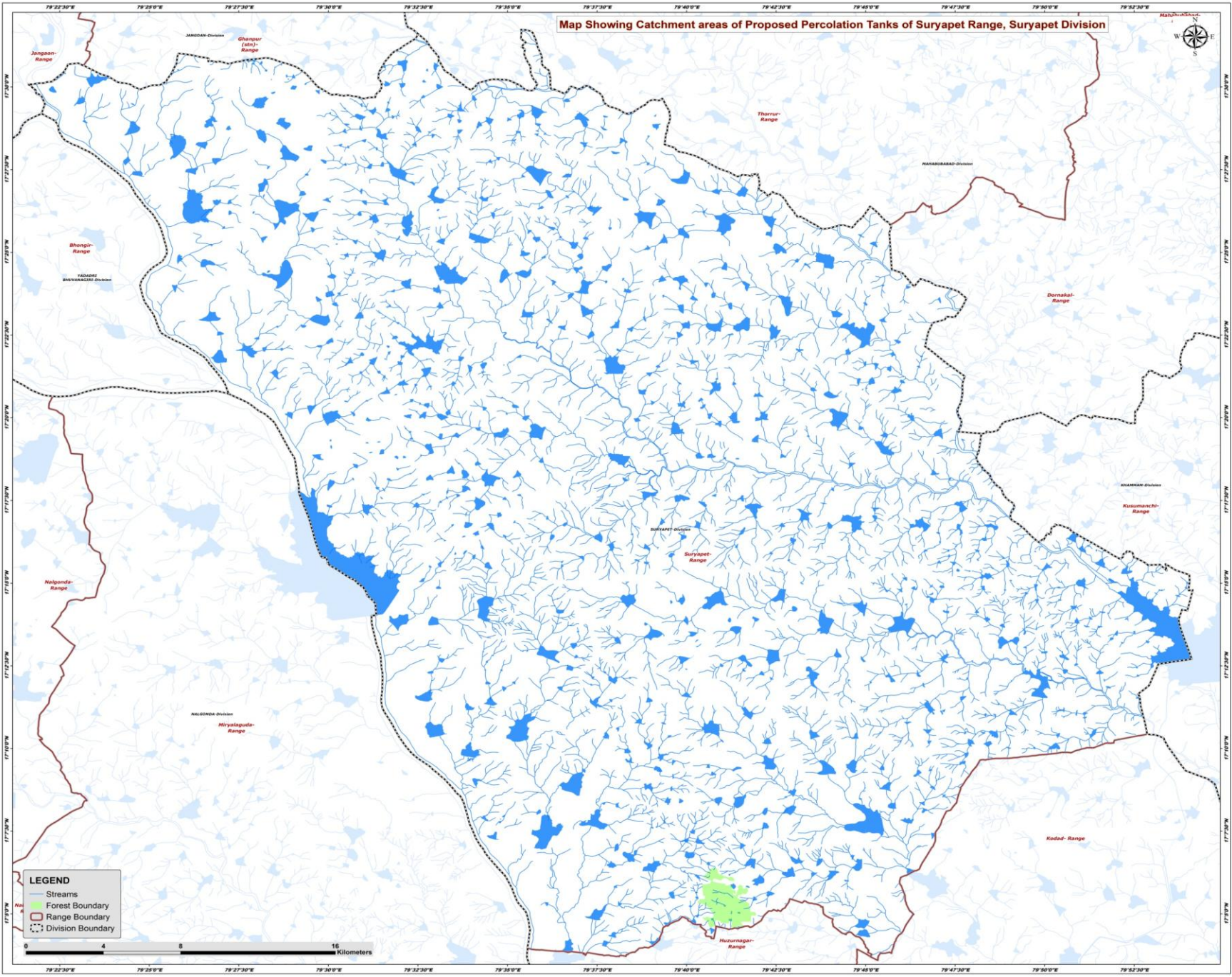


LEGEND

● Proposed PTs	■ CCTs/SCTs - Highly Suitable
● Existing CDI/PTs	■ CCTs/SCTs - Moderately Suitable
— Contours	■ CCTs/SCTs - Least Suitable
— Streams	■ PTs - Highly Suitable
- - - Watershed Boundary	■ PTs - Moderately Suitable
□ Compartment Boundary	■ PTs - Least Suitable
□ Beel Boundary	■ MP/TS and SGPs - Suitable
— Range Boundary	■ Not Suitable
- - - Division Boundary	■ Water Body



Map Showing Catchment areas of Proposed Percolation Tanks of Suryapet Range, Suryapet Division



LEGEND
— Streams
Forest Boundary
Range Boundary
Division Boundary

0 4 8 16 Kilometers